

# QUICK TOUR

**Accurate Tracking | Easy Installation**



Please carefully read the user guide before use in order to quickly get the right to operate. Product appearance, color and accessories are subject to change without prior notice in this manual!

## 1.Products list

number	products name	count	remark
1	GPS tracker	1	
2	Power line	1	
3	Relay	1	
4	MIC line		
5	SOS line	1	
	Instruction manual		

## 2.Functions and Product parameters

- ◆ Real-time tracking ◆ One way communication
- ◆ Vibration/Displacement/Low battery/Power off/over speed alert
- ◆ SOS ◆ ACC detection ◆ Geo-fence ◆ MIC
- ◆ History Route ◆ Cut and resume oil remotely ◆ AGPS/LBS/GPS

## 3. Product parameters

4G Bands WCDMA&GSM	FDD-LTE: B1/B2/B3/B4/B5/B7/B8/B17/B20/B28 TDD-LTE :B38/B39/B40/B41
	B1 B2 B5 B8 & 850/900/1800/1900MHz
Backup Battery	3.7V 200mAh
Operating voltage	10-100V
Location time	Cold start 35s-80s
	Hot start 1s
Location accuracy	5 meters
Operating temperature	-20℃~+55℃
Dimension	89*47*18mm
Weight	53.5g

## 4.LED Indicator Definition

Green Indicator: GPRS/LTE signal

Status of indicator	Meaning
Flash	GSM/GPRS conversation start
Continuously in bright status	No GPRS signal
Green Led off	Power off or in sleep mode

Blue Indicator: GPS

Status of indicator	Meaning
Flash	GPS location successful
Continuously in bright status	GPS signal searching
Blue led off	Power off or in sleep mode

Red Indicator: Power charge

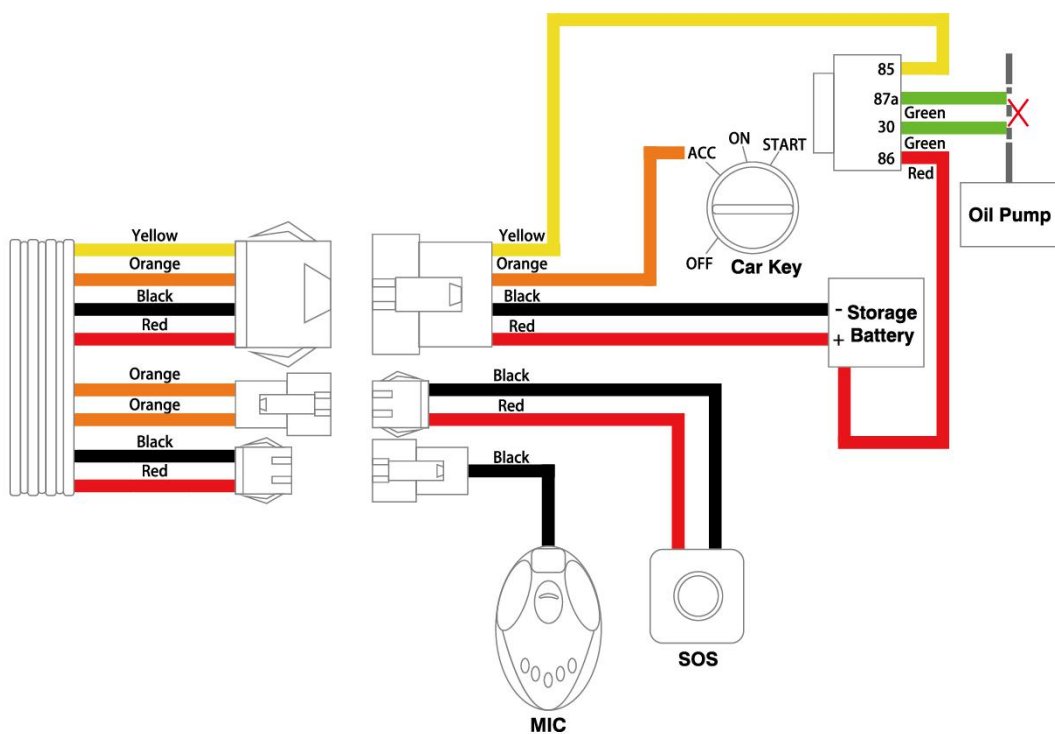
Status of indicator	Meaning
Continuously in bright status	charging
Red led off	Full battery or charged full

NOTE: When the equipment in power saving sleep mode, the light will turn off after about 10 minutes(settable) without any operation.

## 5.Start up

5.1 Find the part shown in the figure below and open the upper cover.

5.2 Put in a NANO SIM card with 4G&GPRS support as shown below:



a, Open the cover, Insert a micro SIM card support 4G network into the slot and make sure the chip side is down.

b, Connect power cable and relay follow above picture.

c, Set admin number,by sending a SMS command to the SIM card inside device.

For example: admin123456 +86186\*\*\*\*\* (+86186\*\*\*\*\*should be your phone number)

d, Set APN: APN123456 CMNET (please use your local APN instead of CMNET,if you do not know the APN content,you should contact your SIM card supplier)

## 6. More Commands

**(Note:Command letters are uniformly lowercase or uppercase)**

Function	Command Format	Reply	Delete	for example
APN	apn123456,content	apn ok		apn123456 cmnet
	apn123456,content,user name	apnuser ok		
	apn123456,content,user name,password	apnpassword ok		
admin number	admin123456+space+admin phone number	admin ok	admin123456 0	admin123456 0
time zone	timezone+123456+space+GMT No.	timezone ok		timezone123456 +1
Timing mode(default 20s)	upload123456 20	upload ok		RangeValue:10-86400s (when the frequency is 600s and more, it will become the Timing mode)
Real-time uploading	d123456			
Tracker	tracker123456	tracker ok		
Position	g123456	Google map		
time sleep	sleep123456 time	sleep time		

		ok		
shock sleep(default )	sleep123456 shock	sleep shock ok		
no sleep	sleep123456 off	sleep off ok		
Extra Power off alarm	pwr1	OK! Pwr Alarm:SM S	pwr0	
SOS	SOS,phone1 number,phone2 number	SOS! S1: S2:	sos,,	SOS,186*****,189** ****
SOS Alert	SOS+X	SOS1		(X=0,1,2,3. 0 close,1 SMS,2 Call,3 SMS+CALL
Cut and resume oil	555	Cut oil OK	666	
Vibrationalal ert way,sensitivi ty	vib3,9		vibX,Y	X=1,2,3,0 (1 SMS,2 Call,3 SMS+CALL,0 off),y =1-9.
Overspeed alarm (50-120km/h )	speed123456 080	speed ok		
Move alarm (distance:10 0-5000m)	move300	move ok	nomove ok	
Arm&Disarm	SF	Arm delay in 0s	CF	
Automatic arm / disarm (Off by default)	auto1	Auto arm by Standby 10 mins:ON	Auto0	
Automatic arm / disarm time	acclt,600	Auto arm by Standby 10 mins:OFF	accrt,20	
Restart	rst	restart ok		
Back to factory	format	No reply		

Firmware update	checkupdate			
-----------------	-------------	--	--	--

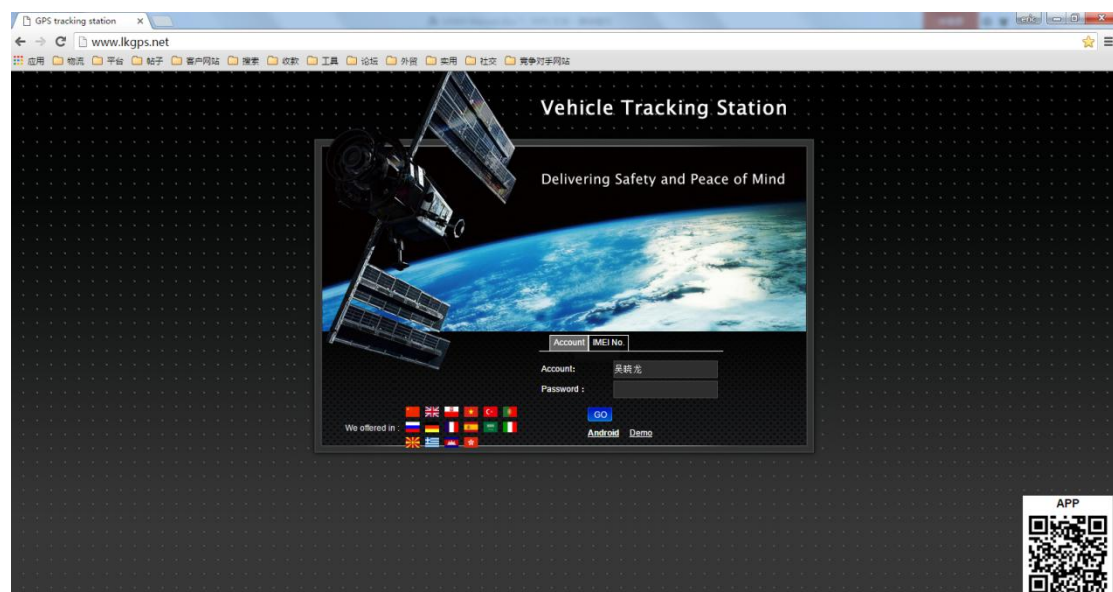
## 7.Download phone APP



Method 1: Scan above QR to download;

Method 2: search “LKGPS2” in the app store or Google play store to download.

## 7. Log in by website and phone APP

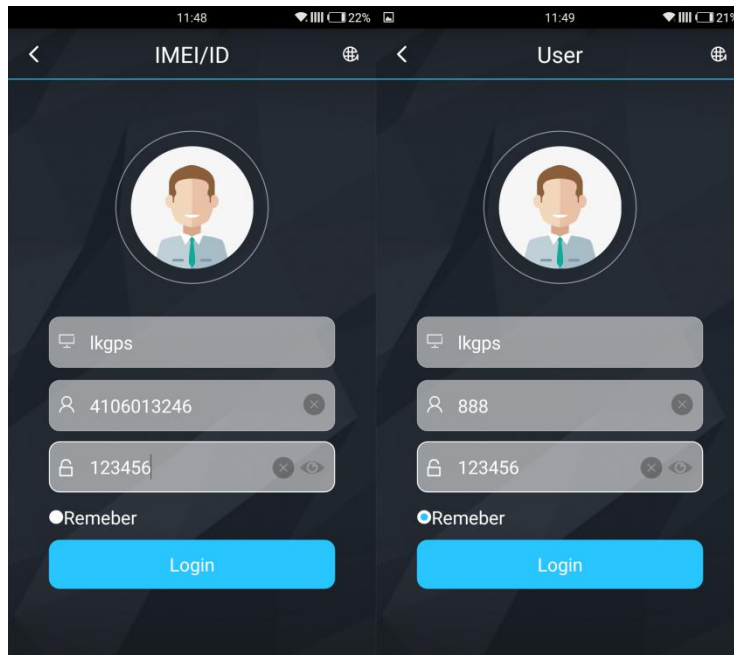


## Log in by Website:

Open the website [www.lkgps.net](http://www.lkgps.net) , choose IMEI, enter the 10-digit bar code of the device, the default password is 123456, click “GO” to log in into the platform.

## Log in by Phone APP:

Please see the following photo:



## 9.Faults & The solutions

### Q: Start up Fail?

A: Check the cable connect right or not.

### Q: The device can not obtain location information?

A: Place the unit at the open area to test.

### Q: How to choose SIM card?

A: the SIM card must support GSM&GPRS, and ensure that the

card has enough currency and credit.

**Q: How to use in the foreign countries?**

A: please set the APN before use, please edit the text “APN123456 CMNET “ and send it to the SIM card of the device, CMNET is Chinese operator’s APN, Replace the corresponding APN when use in other countries, APN details, please consult your local SIM card carrier.

**10.Cautions**

Please comply with the instructions to extend the unit life:

1. Keep the unit dry. Any liquid, i.e. rain, moisture, may destroy or damage the inside circuitry.
2. Don’t use & store the unit in dusty places.
3. Don’t put the unit in overheated or over cooled places.
4. Handle carefully. Don’t vibrate or shake it violently.
5. Clear the unit with a piece of dry cloth. Don’t clean in chemicals, detergent.
6. Don’t paint the unit, this may cause some foreign materials left in between the parts.
7. Don’t disassemble or refit the unit.



8. Please use the battery and charger provided by manufacturer.

Using other batteries and chargers will cause unwanted situation.