

QUICK TOUR

Accurate Tracking | Power standby

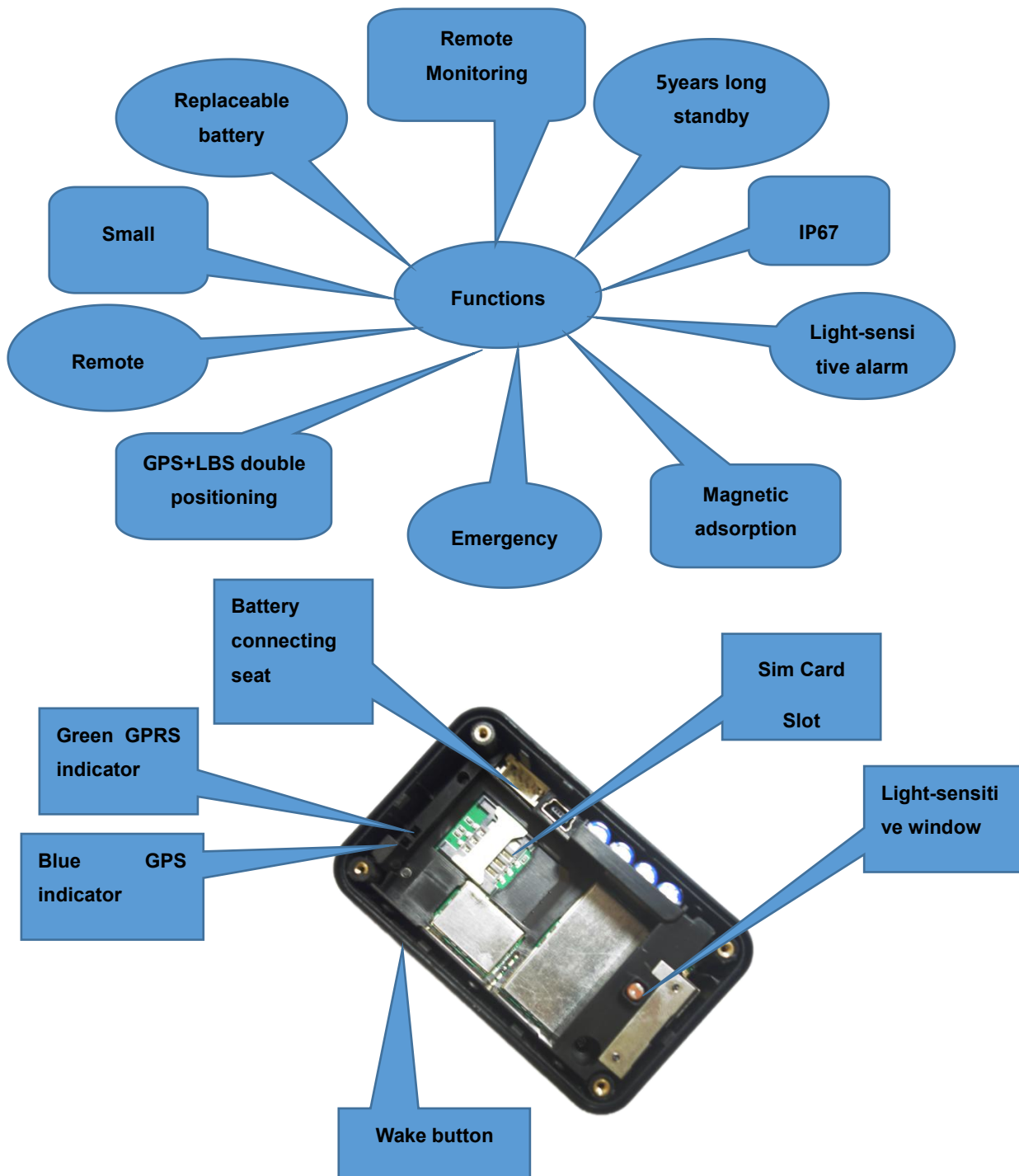


Please carefully read the user guide before use in order to quickly get the right to operate. Product appearance, color and accessories are subject to change without prior notice in this manual!

① Product introduction and functions

This product is long standby locator, it's simple and elegant that can be installed on any moving target object. Products are divided into two kinds of structures, normal structure and with magnetic structures. Built-in replaceable battery, data would be uploaded once a day based on station location, it can be five years standby.

Terminal supports GPS positioning and base station location. Product is suitable for car loans management, rental car management, fixed asset management, valuables management, logistics and other industries.



4.Content Specs.

Content	Specs.
Dim.	75*45*25mm
Weight	105g
Network	GSM/GPRS
Band	WCDMA 900/2100 Mhz; GSM850/900/1800/1900Mhz
GPS chip	UBLOX
GPS sensitivity	-159dBm
GPS accuracy	10m
Time To First Fix	Cold status 35-80s Warm status 35s Hot status 1s
Battery	Un-chargeable 8000mAh
Storage Temp.	-40°C to +85°C
Operation Temp.	-20°C to +55°C
Humidity	5%--95% non-condensing

② LED Indicator Definition

Green Indicator: GPRS

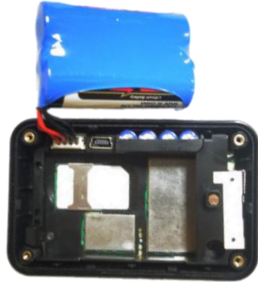
Status of indicator	Meaning
Flash	GSM/GPRS conversation start
Continuously in bright status	No GPRS signal
Green Led off	Power off or in sleep mode

Blue Indicator: GPS

Status of indicator	Meaning
Flash	GPS location successful
Continuously in bright status	GPS signal searching
Blue led off	Power off or in sleep mode

NOTE: In battery mode, the LED light will turn off after three minutes power on. If the equipment is in sleep mode, press the wake button for three minutes with the screwdriver tip, and then released , the device will work five minutes (for test)

③ Start up



Picture 1



Picture 2



Picture 3



Picture 4

a, Open the back cover with the screw driver, Insert a sim card support GSM/GPRS network into the slot and make sure the chip side is down. Please see picture 1.

b, Plug the battery connector into the host connector seat, the host will automatically power on, two indicators light. Please see picture 2.

c, Close the battery cover, and tighten the screws. Make sure do not hidden the light-sensitive window. Please see picture 3 and picture 4.

d, Magnetic tape section can be directly adsorbed on the metal body in the car.

④ Introduction for operating and removing

Long standby mode: Terminal will open base station location for one time daily by default , and then goes into deep sleep, the terminal does not perform any remote tracking and other tasks during sleep.

Tracking mode: Open GPS real-time tracking mode, the default track time is 72 hours, please log in into the platform www.lkgps.net or phone APP to finish set or send SMS command **DW999**.

If terminal is in sleep mode, the command cannot be executed immediately, please wait patiently, the command will be executed within 24 hours.
Send SMS command **DW005** to cancel this mode.

Master number: log in into the platform www.lkgps.net , phone APP or send SMS command to the SIM card to finish set.

SMS instruction format: admin123456+ space +master phone number
(Master phone number is the user's phone number)

Remove alarm: After installed the terminal, light-sensitive window will be covered, When the terminal is removed, open demolish alarm. Alarm can be set by sending an SMS command SOSX, X=0,1,2,3.(this command must be send by the master number)

SOS0=close alarm

SOS1= call alarm

SOS2=SMS alarm

SOS3=call+ SMS alarm (Factory default)

Timing upload interval setting: dw005, 02 (unit: hours, scope of 02-48)

Fixed-point upload feature set: dw005, 24120 (1200 on behalf of the point in time, or 12 o'clock)

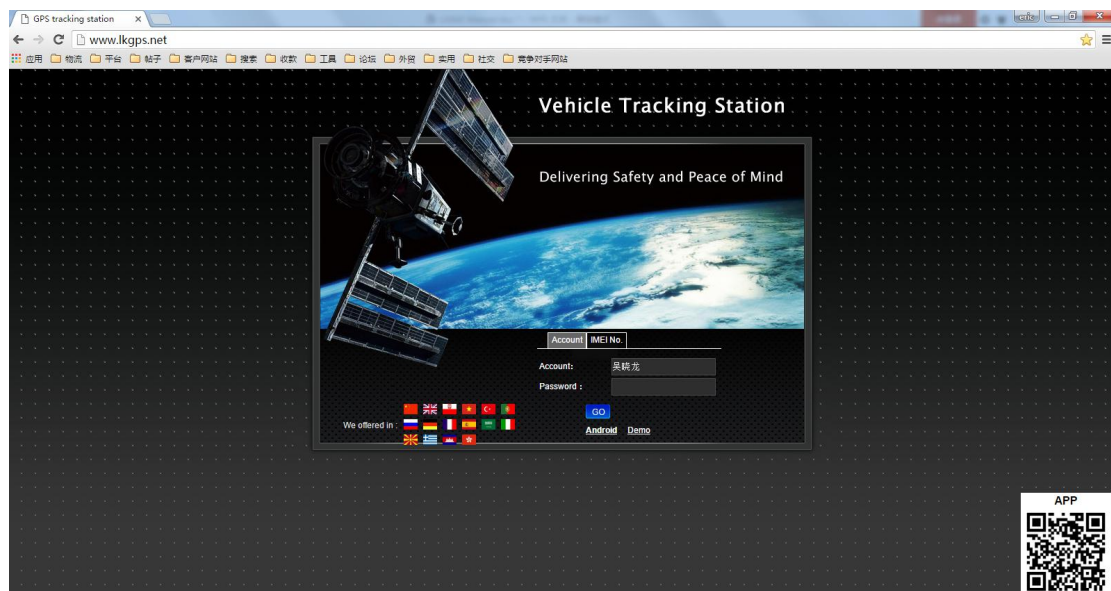
⑤ Download phone APP



Method 1: Scan above QR to download;

Method 2: search “LKGPS2” in the app store or Google play store to download.

⑥ Log in by website and phone APP

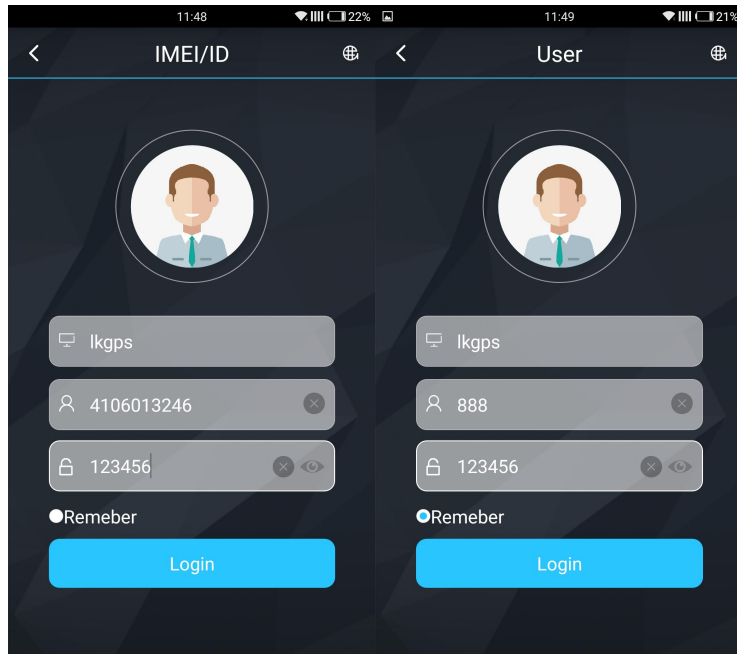


Log in by Website:

Open the website www.lkgps.net, choose IMEI, enter the 10-digit bar code of the device, the default password is 123456, click “**GO**” to log in into the platform.

Log in by Phone APP:

Please see the following photo:



⑦ Faults & The solutions

Q: Start up Fail?

A: Check the battery connector is fully connected with the host connector seat, hold the wake button for 3 seconds with screwdriver tip and then release.

Q: The device can not obtain location information?

A: Place the unit at the open air to test.

Q: How to choose SIM card?

A: the SIM card must support GSM&GPRS, and ensure that the card has enough costs and data.

Q: How to use in the foreign countries?

A: please set the APN before use, please edit the text “APN123456 CMNET “ and send it to the SIM card of the device, CMNET is Chinese operator’s APN, Replace the corresponding APN when use in other countries, APN details, please consult your local SIM card carrier.

⑧ Cautions

Please use the original batteries of terminal specified, all warranty services becomes invalid if use any other accessories all .

Terminal manufacturers will not assume liability for any warranty if terminal damaged by using any non-original factory parts

Do not soak the battery in water or in a fire, do not bend or force open the battery;

Do not disassemble the terminal, improper handling may cause damage the device by non-specialists ; batteries is special batteries, charging is not allowed!