

LK105B Pet GPS manual



Please read this guide carefully before use so that you can use it correctly and quickly. Product appearance, color and accessories are subject to change without notice!

1. Products list

number	products name	count	remark
1	GPS locator	1	
2	Magnet charging cable	1	
3	Charger	1	
4	bottom support	1	
5	Instruction manual	1	

2. Product function

- ◆ Real-time tracking / AGPS assisted positioning,
- ◆ Upload methods: timing, real-time mode;
- ◆ Vibration dog training in multiple modes, and its own speaker;
- ◆ Virtual fence / history track playback / displacement / low power alarm etc., alarm data upload to cloud background.
- ◆ Real-time health monitoring (sleep, step counting);
- ◆ LED indicator: charging, GPS, communication, dog training status;

3. Product parameters

Product name	4G Pet (Dog training) GPS Tracker
Model	LK105B
Suitable Object	Dog and other medium or large-sized animals
4G Bands	FDD-LTE:B1 B2 B3 B4 B5 B7 B8 B12(17) B20 B28 TDD-LTE:B38 B39 B40 B41 WCDMA:B1 B2 B5 B8 GSM:850/900/1800M/1900
Network	GSM/GPRS/LTE
Battery	3.7V 900mAh polymer lithium battery
Start-up time	Cold start 35s-80s
	Hot start 35s-80s
GPS accuracy	10m
LTE module	CPU: SC9820E
GPS	-159dBm
Operating temperature	-20℃~70℃noncondensing
operating humidity	5%-90%
storage temperature	-40℃ ~85℃
Waterproof level	IP68 Soaking 1.5m below water
SIM card	Nono-card, self-bouncing card
Dimension	70*39.5*17mm
Weight	65g

4. LED Indicator Definition

LED Indicator Definition

Green Indicator: GPRS/LTE signal

Status of indicator	Meaning
Flash	GSM/GPRS conversation start
Continuously in bright status	No GPRS signal

Green Led off	Power off or in sleep mode
---------------	----------------------------

Blue Indicator: GPS signal

Status of indicator	Meaning
Flash	GPS location successful
Continuously in bright status	GPS signal searching
Blue led off	Power off or in sleep mode

Red Indicator: Power charge and Find dog

Status of indicator	Meaning
Continuously in bright status	charging/finding
Red led off	Power off or charged full

5. Device

5.1 Open the cover of the device



5.2 Install the SIM card correctly **that to active device**)

- Open the cover by screwdriver, Insert a nano SIM card support LTE/ GSM/GPRS network into the slot and make sure the chip side is down.
- Turn on the unit outdoors by Pushing the button to "On" the indicator is on.
(when the green light and blue light are both flashing , you can do setting by step as below:)
- Set admin number, by sending a SMS command to the SIM card inside device.

For example: admin123456 +86186***** (+86186***** should be your phone number)

- In 10 or 40 seconds, the unit will begin to work and acquire the GSM signals as well as the GPS signals. The indicator will keep flashing every 3 seconds when the unit has received the

signals.

- If the device is still not work on platform, pls check query parameters sms “**param1**” to conform IP address .

5.3 Battery and charger

Charge the battery for 8-12 hours on the first time. Please use the charger and battery that are configured by the manufacturer. The standard configuration battery is a lithium battery.

Warning :

a: The battery of this product is a lithium battery that contains harmful chemical components and may explode. Please do not force it, puncture it and put it into fire.

b: Please charge in time to keep the equipment working properly.

6. More Commands

Function	Command Format	Reply	Delete	for example
Apn	apn+123456+space+content	apn ok		apn123456 cmnet
	apnuser+123456+space+content	apnuser ok		
	apnpasswd+123456+space+content	apnpasswd ok		
admin number	admin123456+space+admin phone number	admin ok	noadmin 12345	admin123456 132*****
time zone	timezone+123456+space+GMT No.	timezone ok		timezone123456 +1
Timing mode	upload123456 10	upload ok		Value:10-3600s
Real-time uploading	d123456			
Position	G123456# or where	google map		
Monitor	JT			
Power low alarm	LOW,1			
Power save mode	sleep123456 time	sleep time ok	sleep123456 off	sleep off ok

shock sleep	sleep123456 shock	sleep shock ok		
Restart	rst	restart ok		
Back to factory	format	No reply		
Language setting	lag1	English oK		
Signal status	status	BAT:6, GPRS:1,GSM:2,GPS:1,ACC:0,oil:0,Power:1,S:0		
Parameter query	Param1	software version number, device ID, domain name, APN, network signal, security status, vibration sensitivity		
Firmware update	checkUpdate			

More details command by APP , please check from app while device is online.

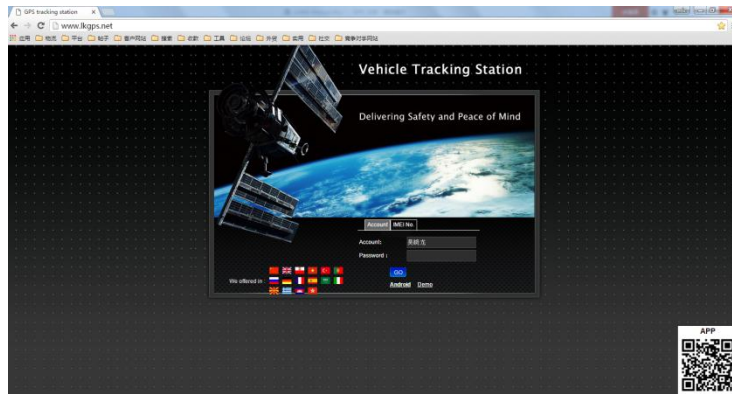
6. Download phone APP



Method 1: Scan above QR to download;

Method 2: search “LKGPS2” in the app store or Google play store to download.

7. Log in by website and phone APP



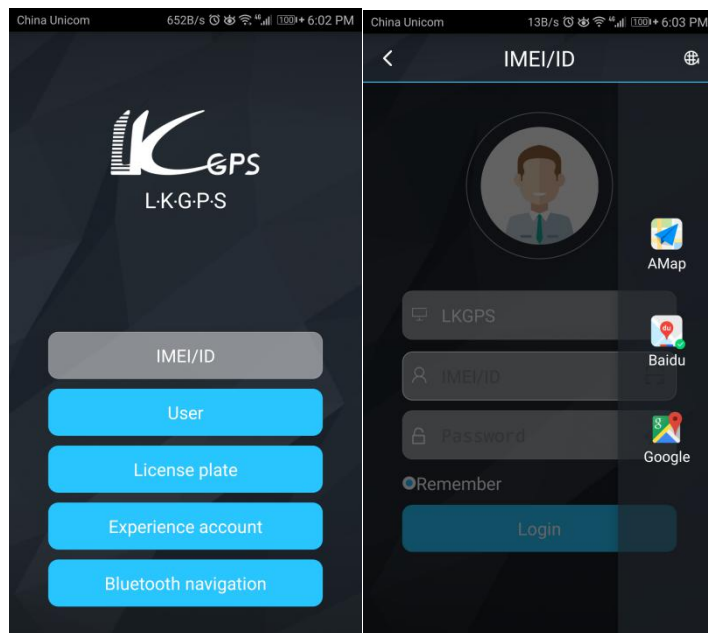
8.1 Log in by Website:

Open the website www.lkgps.net, choose IMEI, enter the 10-digit bar code of the device, the default password is 123456, click “GO” to log in into the platform.

8.2 Log in by Phone APP:

Please see the following photo:

8.2.1 APP please refer to the figure below for login:



8.2.2 Select "IMEI / ID login" for the first login, select "666" for the first column of address, input 10 digits on the device barcode, and the default password is 123456, Click "log in" to log in

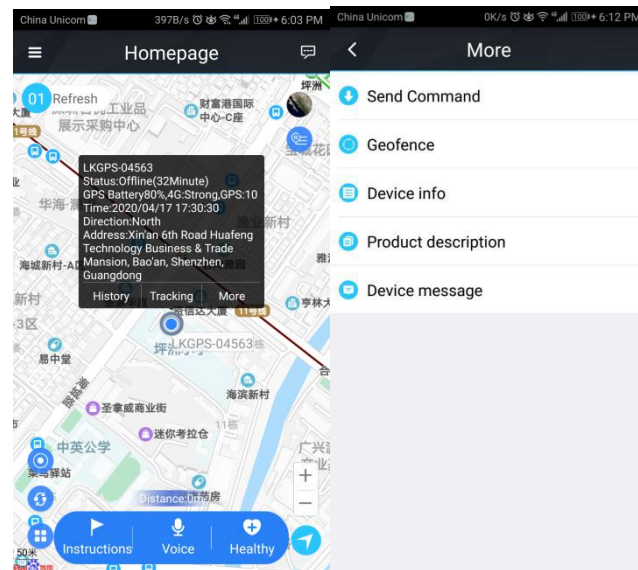
After logging in, set up and improve the user information, you can use other login methods

Note: (1) the optional items in the address column of the first column: select "666" for domestic users and "lkgps" for foreign users,

(2) Error "wrong user name or password" appears in the address bar, unable to log in

normally

8.2.3 How to use the interface of stand-alone software



The settings include: reminder settings (mobile phone sound and vibration settings), password modification, skin replacement, instructions for use (multi version instructions), log out of the current login

More settings include: command issuing (instruction 1, instruction 2, instruction 3, instruction 4, instruction 5, instruction 6, instruction 7, instruction 8, instruction 9)

Electronic fence, equipment information (equipment name, equipment number, expiration time, equipment model, equipment SIM card number, type, gender, weight, age, birthday, owner name, owner phone number, icon), product description, equipment message

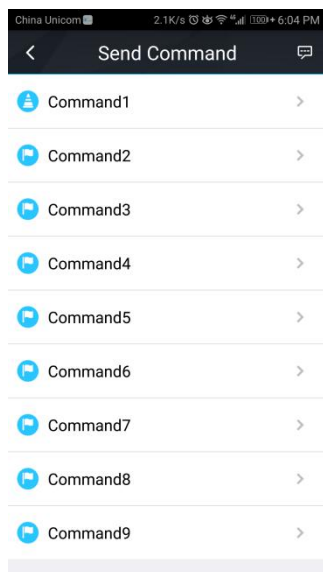
Instruction: instruction 1, instruction 2, instruction 3, instruction 4, instruction 5, instruction 6, instruction 7, instruction 8, instruction 9

Health: step counting, sleep

Note: (1) if you need to use a multi machine version of the advanced account, please contact the equipment manufacturer. You can use it after opening the exclusive account. The software operation interface is slightly different

8.2.4 Dog training function

2.3.1 Command setting(edit command name from APP

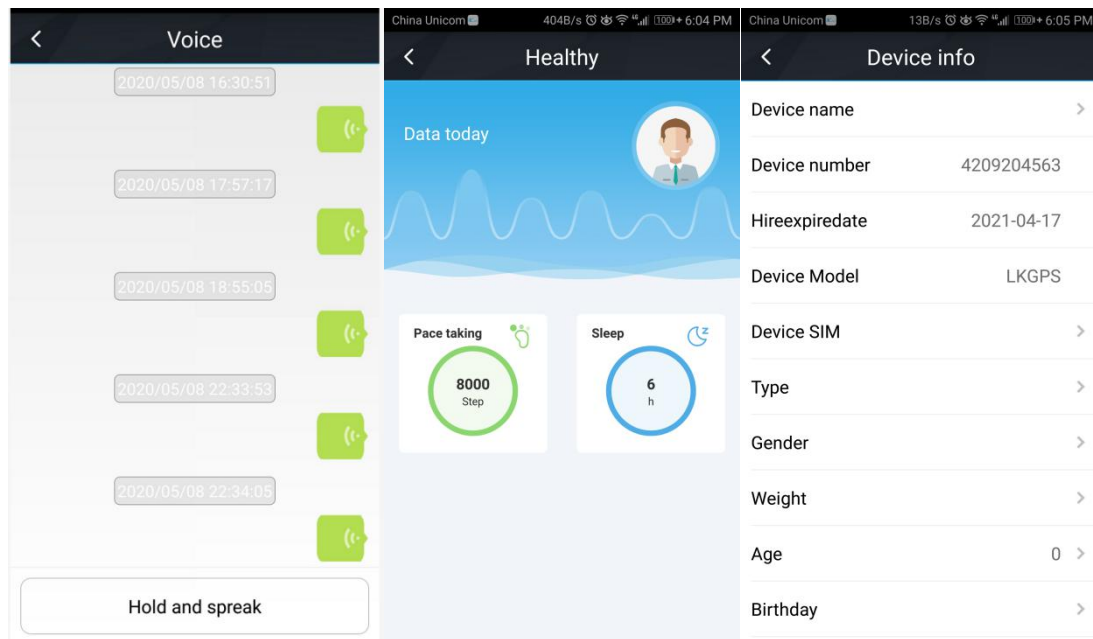


8.2.5 Dog Training interface Send command by short press

Rename by long press

Default command name	Function	Vibration type
Command 1	Weak Vibration for 0.5s	One Vibration for 0.5s
Command 2	Interval Weak Vibration for 10s	Interval Vibration, 0.5s every time, 20 times,for 10s
Command 3	Medium vibration for 0.8s	One Vibration for 0.8s
Command 4	Interval Medium vibration for 10s	Interval vibration, 0.8s every time, 13 times for 10s
Command 5	Strong vibration for 2s	One Vibration for 2s
Command 6	Interval vibration for 10s	Interval Vibration,1.25s every time, 9 times for 10s
Command 7	“Ticking” for 0.5s	One ticking for 0.5s
Command 8	“Ticking” for 10s	Interval ticking, 0.5s every time, 20 times for 10s
Command 9	On: Light flashes	Off: Light turns off

8.3 How to use health monitoring interface



9. Faults & The solutions

Q: Start up Fail?

A: Check the battery charge full or not.

Q: The device can not obtain location information?

A: Place the unit at the open area to test.

Q: How to choose SIM card?

A: the SIM card must support 4G, and ensure that the card has enough currency and credit.

Q: How to use in the foreign countries?

A: please set the APN before use, please edit the text “APN123456 CMNET “ and send it to the SIM card of the device, CMNET is Chinese operator’s APN, Replace the corresponding APN when use in other countries, APN details, please consult your local SIM card carrier.

10. Cautions

Please comply with the instructions to extend the unit life:

1. Keep the unit dry. Any liquid, i.e. rain, moisture, may destroy or damage the inside circuitry.
2. Don’t use & store the unit in dusty places.
3. Don’t put the unit in overheated or over cooled places.
4. Handle carefully. Don’t vibrate or shake it violently.
5. Clear the unit with a piece of dry cloth. Don’t clean in chemicals, detergent.
6. Don’t paint the unit, this may cause some foreign materials left in between the parts.
7. Don’t disassemble or refit the unit.
8. Please use the battery and charger provided by manufacturer. Using other batteries and chargers will cause unwanted situation.