

LK610B QUICK TOUR

Card type GPS positioning terminal



Please read this guide carefully before use so that you can use it correctly and quickly. Product appearance, color and accessories are subject to change without notice!

1. Product list

No.	name	Quantity	remark
1	GPS tracker	1	
2	USB cable	1	
3	manual	1	

4	Ejection Pin	1	
5	Host the rope	1	Option

2. Product Features

- Positioning mode: GPS+BD/LBS positioning.
- Button SOS: functions include hang up button, power on button, SOS button.
- Hang up key: short press to hang up after dialing.
- Power on button: long press 3 seconds to power on
- SOS alarm: short press 3 times to alarm, the alarm mode is SMS (default) telephone is optional, and the GPS is opened synchronously to upload the location;
- Button 1 Family number 1: Support SMS, GPRS setting commands, long press 3S to dial the set number, two-way conversation
- Button 2 Family number 2: Support SMS and GPRS setting commands, long press 3S to dial the set number, two-way conversation,
- Support short press to answer the call
- Query positioning by platform;
- Positioning data upload mode: timing, fixed point, power saving optional;
- Enter and exit electronic fence alarm; (platform function)
- Blind spot supplementary report: support
- Alarm information upload background, APP push: SOS alarm, low battery alarm;
- Support AGPS function: auxiliary function to accelerate GPS positioning
- Support remote upgrade

3. Product parameters

info	name	Card type GPS positioning terminal
	model	LK610
	color	white
	Installation method	Wearable
	fit	Elder children
	SIM card holder	Ordinary medium card
	Network	FDD-LTE:B1 B2 B3 B4 B5 B7 B8 B12(17) B20 B28 TDD-LTE: B38 B39 B40 B41 WCDMA:B1 B2 B5 B8 GSM:850/900/1800/1900
	LED	Red, green, blue
	Chip	Spreadtrum SC9820E

Configuration	G-sensor	Built in
	battery	800mAh Polymer battery
	Charging Voltage	DC: 5V /1A
	Electrostatic protection	touch +/-7KV (Car Tacker anti-static standard)
		Air +/-14KV (Car Tacker anti-static standard)
	Operating temperature	-20℃~70℃
	Working humidity	5%-90%
	storage temperature	-40℃ ~85℃
	Size	110*60*10mm
	weight	61g
GPS	Received signal strength	Above 48dBhz
	Received power	-120dBm
	positioning accuracy	10 m
	Positioning time	Cold start 38s
		Alarm start 35s
		Hot Start 2s
	Tracking sensitivity	-165dBm
	Capture sensitivity	-148dBm
	Number of channels	66 channels

4. LED Indicator Definition

LED Indicator Definition

Green Indicator: GPRS/LTE signal

Status of indicator	Meaning
Flash	GSM/GPRS conversation start
Continuously in bright status	No GPRS signal
Green Led off	Power off or in sleep mode

Blue Indicator: GPS signal

Status of indicator	Meaning
Flash	GPS location successful
Continuously in bright status	GPS signal searching
Blue led off	Power off or in sleep mode

Red Indicator: Power charge and Find dog

Status of indicator	Meaning
Continuously in bright status	charging/finding
Red led off	Power off or charged full

5. Device

5.1 Open the USB rubber plug by hand and insert a 4G sim card as shown in the picture with the chip facing down.



5.2 Install the SIM card correctly **that to active device**)

- Open the cover by screwdriver, Insert a nano SIM card support LTE/ GSM/GPRS network into the slot and make sure the chip side is down.
- After pressing the SOS key for three seconds, the device can be started.
(when the green light and blue light are both flashing , you can do setting by step as below:)
- Set admin number,by sending a SMS command to the SIM card inside device.
For example: admin123456 +86186***** (+86186*****should be your phone number)
- In 10 or 40 seconds, the unit will begin to work and acquire the GSM signals as well as the GPS signals. The indicator will keep flashing every 3 seconds when the unit has received the signals.
- If the device is still not work on platform, pls check query parameters sms “param1” to conform IP address .

5.3 Battery and charger

Charge the battery for 8-12 hours on the first time. Please use the charger and battery that are configured by the manufacturer. The standard configuration battery is a lithium battery.

Warning :

a: The battery of this product is a lithium battery that contains harmful chemical components and may explode. Please do not force it, puncture it and put it into fire.

b: Please charge in time to keep the equipment working properly.

6. More Commands:

(Note:Command letters are uniformly lowercase or uppercase)

Function	Command Format	Reply	Delete	for example
Apn	apn123456,content	apn ok		apn123456 cmnet
	apn123456,content,user name	apnuser ok		
	apn123456,content,user name,password	apnpasswd ok		
admin number	admin123456+space+admin phone number	admin ok	admin123456 0	admin123456 0
time zone	timezone+123456+space+GMT No.	timezone ok		timezone123456 +1
Timing mode(default 60s)	upload123456 60	upload ok		RangeValue:10-86400s(when the frequency is 600s and more, it will become the Timing mode)
Real-time uploading	d123456			
Tracker	tracker123456	tracker ok		
SOS	SOS+space+phone1,Phone2	sos number ok		SOS 132*****
SOS Alert	SOS+X	SOS1		(X=0,1,2,3. 0 close,1 SMS,2 Call,3 SMS+CALL)
Position	g123456	google map		
Power low alarm	LOW,1			
Power save mode	sleep123456 time	sleep time ok	sleep123456 off	sleep off ok
shock sleep	sleep123456 shock	sleep shock ok		
Restart	rst	restart ok		

Back to factory	format	No reply		
Language setting	lag1	English oK		
Signal status	status	BAT:6, GPRS:1,GSM:2,GPS:1,ACC:0,oil:0,Power:1,S:0		
Parameter query	param1	software version number, device ID, domain name, APN, network signal, security status, vibration sensitivity		
Firmware update	checkupdate			

More details command by APP , please check from app while device is online.

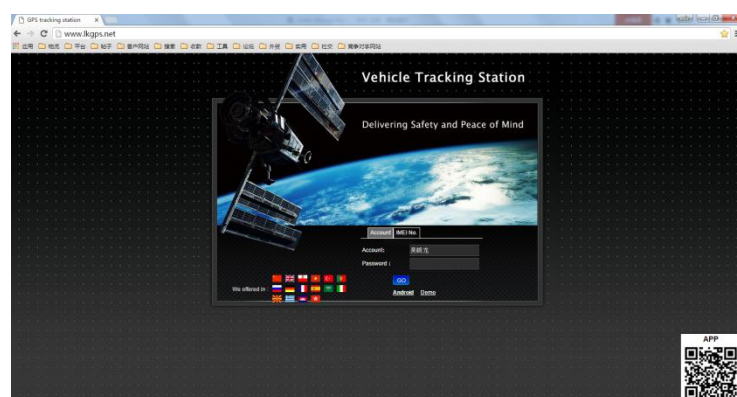
7. Download phone APP



Method 1: Scan above QR to download;

Method 2: search “LKGPS2” in the app store or Google play store to download.

8. Log in by website and phone APP



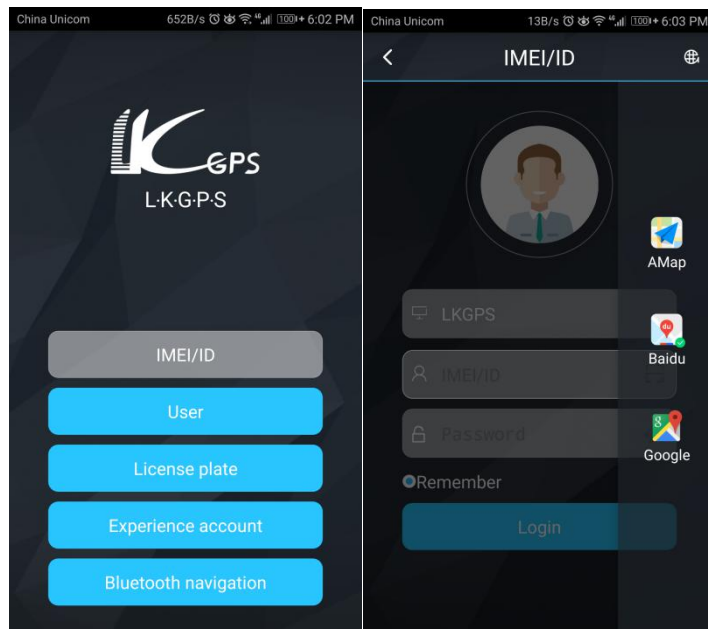
8.1 Log in by Website:

Open the website www.lkgps.net, choose IMEI, enter the 10-digit bar code of the device, the default password is 123456, click “GO” to log in into the platform.

8.2 Log in by Phone APP:

Please see the following photo:

8.2.1 APP please refer to the figure below for login:



8.2.2 Select "IMEI / ID login" for the first login, select "666" for the first column of address, input 10 digits on the device barcode, and the default password is 123456, Click "log in" to log in

After logging in, set up and improve the user information, you can use other login methods

Note: (1) the optional items in the address column of the first column: select "666" for domestic users and "lkgps" for foreign users,

(2) Error "wrong user name or password" appears in the address bar, unable to log in normally.

9.Faults & The solutions

Q: Start up Fail?

A: Check the battery charge full or not.

Q: The device can not obtain location information?

A: Place the unit at the open area to test.

Q: How to choose SIM card?

A: the SIM card must support 4G, and ensure that the card has enough currency and credit.

Q: How to use in the foreign countries?

A: please set the APN before use, please edit the text “APN123456 CMNET “ and

send it to the SIM card of the device, CMNET is Chinese operator's APN, Replace the corresponding APN when use in other countries, APN details, please consult your local SIM card carrier.

10.Cautions

Please comply with the instructions to extend the unit life:

1. Keep the unit dry. Any liquid, i.e. rain, moisture, may destroy or damage the inside circuitry.
2. Don't use & store the unit in dusty places.
3. Don't put the unit in overheated or over cooled places.
4. Handle carefully. Don't vibrate or shake it violently.
5. Clear the unit with a piece of dry cloth. Don't clean in chemicals, detergent.
6. Don't paint the unit, this may cause some foreign materials left in between the parts.
7. Don't disassemble or refit the unit.
8. Please use the battery and charger provided by manufacturer. Using other batteries and chargers will cause unwanted situation.